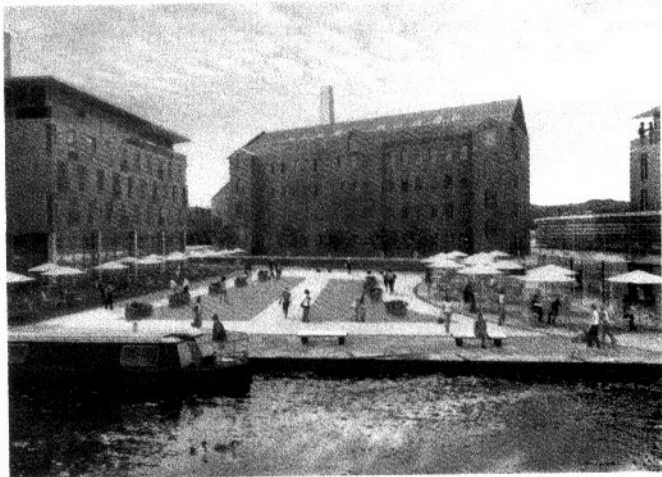


OPEN CHANNELS, OPEN CANAL



Revised plans have been submitted for the £175m Waterfront Quarter scheme in Huddersfield, West Yorkshire. Developer Ramsden & Colne Developments has dropped the height of the buildings and changed the position of the new public square in the wake of local consultation and talks with British Waterways, English Heritage and the local

civic society. The Huddersfield Narrow Canal, which had been taken into a tunnel, will now be opened up as part of the scheme, which features 300,000 sq ft of offices, 460,000 sq ft of residential space, a hotel, gym, crèche and restaurants. Knight Frank's Leeds office is acting for the developer. The scheme will be considered in December.